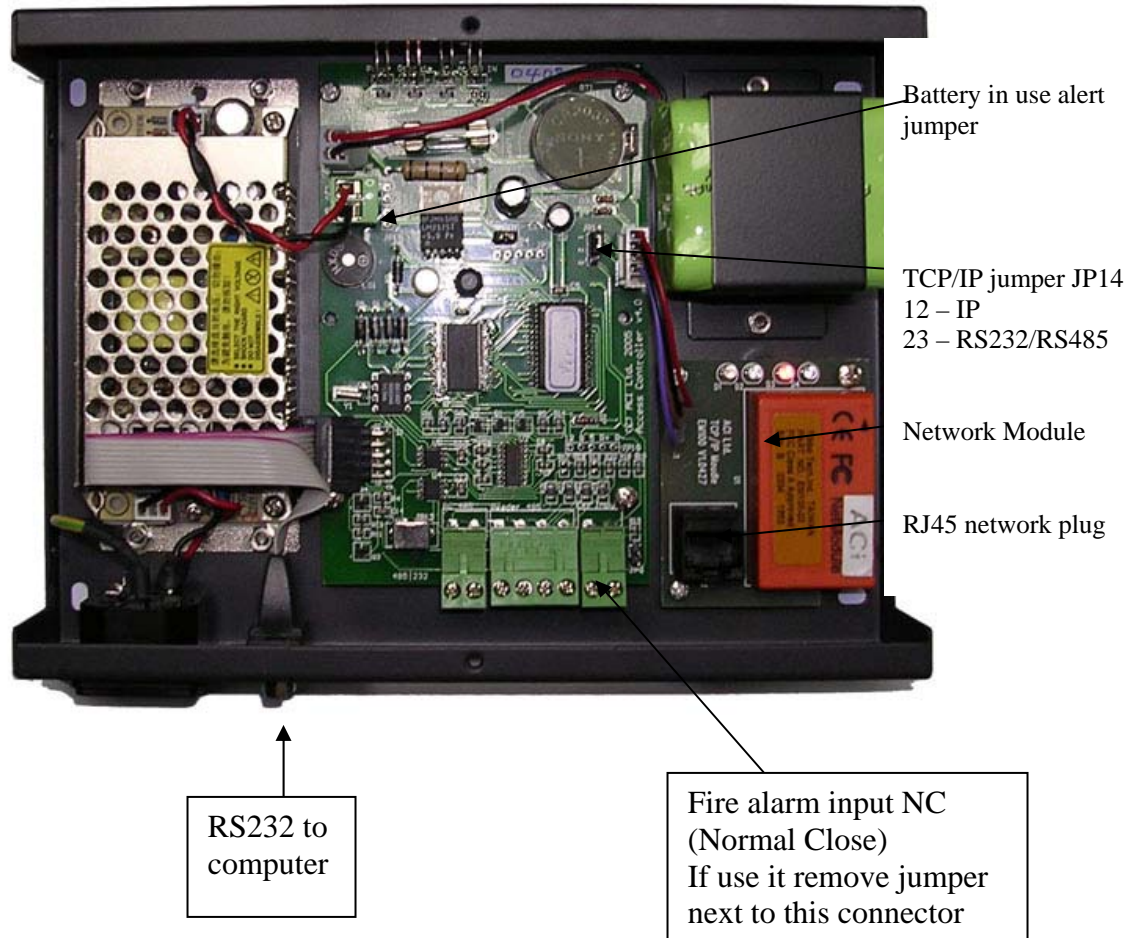


ACI 154 Network Module Configuration Guide

After install the ACI Network Module software (supply by Tibbo Tech”), you may now connect your controller via your LAN or WAN connection.

All network module default IP will be 192.168.2.90 or 91 - 94 with config ready with the following setting.

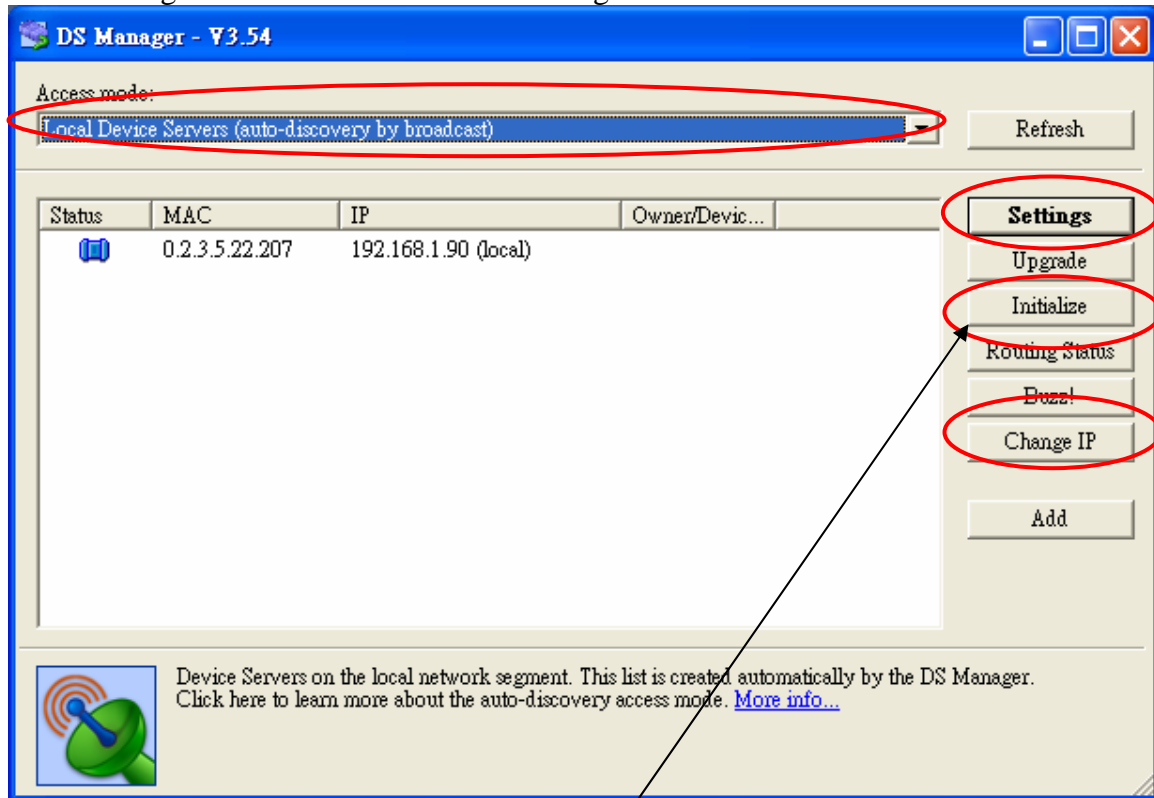
Multi-door Master Controller with TCP/IP module



If your computer is not in the same network 192.168.1.xxx, change it now.

Set your computer firewall to OFF and select Auto discovery by broadcast and click Refresh button.

Click Settings button to view or edit the config.



Do not click this button, if you did, all ACI require setting will be reset. Now you need to do the following:

1. click Settings
2. click Load, select ACI154 Network Config Data File Template.ds (inside the zip)
3. click Save
4. Try ACM connection again.

Settings: DS <V3.16(S)>+N

Network Settings | Serial Settings | Outbound packets | All

Owner name	
Device name	
MAC-address	0.2.3.5.42.63
DHCP	0- Disabled
IP-address	192.168.1.90
Port	1001
Transport protocol	0- UDP
Broadcast UDP data	0- Reject
Inband commands	(irrelevant)
Data login	(irrelevant)
Connection timeout (min)	1
Routing Mode	0- Server (Slave)
Connection mode	(irrelevant)
Link Server login	(irrelevant)
Destination IP-address	(irrelevant)
Destination port	(irrelevant)
ddNS Server login	0- Disabled

Save Load Password OK Cancel

Settings: DS <V3.16(S)>+N

Network Settings | Serial Settings | Outbound packets | All

Serial interface	2- Automatic
RTS/CTS flow control	0- Disabled or remote
DTR mode	0- Idle or remote
Baud rate	4- 19200 bps
Parity	0- None
Data bits	1- 8 bits
Soft entry into Serial program	0- Disabled
On-the-Fly commands	1- Enabled
Password for on-the-Fly commands	0- Disabled
Notification bitmask	0

Save Load Password OK Cancel

You may need to fine tune the value of Max intercharacter delay from 5 – 10 when you have communication delay happen.

Settings: DS <V3.16(S)>+N

Network Settings | Serial Settings | Outbound packets | All

Max packet length	255
Max intercharacter delay	10
Start on any char	1- Yes
Use start-character	0- No
Start character (ASCII code)	0
Use stop-character	0- No
Stop-character (ASCII code)	0
Number of post-characters	0

Save Load Password OK Cancel

DS Manager - V3.54

Access mode:
 Device Servers from the Address Book Refresh

Status	IP	Access	Owner/Device n...	Comment

Settings

Upgrade

Initialize


Routing Status

Buzz!


Add

Remove

Edit

 Device Servers from the address book. The address book is created manually using Add, Remove, and Edit buttons. Click here to learn more about the address book access mode. [More info...](#)

Address Book Entry

 IP-address: 192 . 168 . 1 . 200

Comment:

Access method: Out-of-Band (UDP)

Access port: 65535

OK Cancel

After setting complete, click OK button.

In ACM software, select the Master Controller, double-click and go into the configuration, select TCP/IP connection and key-in the IP as 192.168.1.90 or other you are using.

Set JP4 to 12 for network connection

