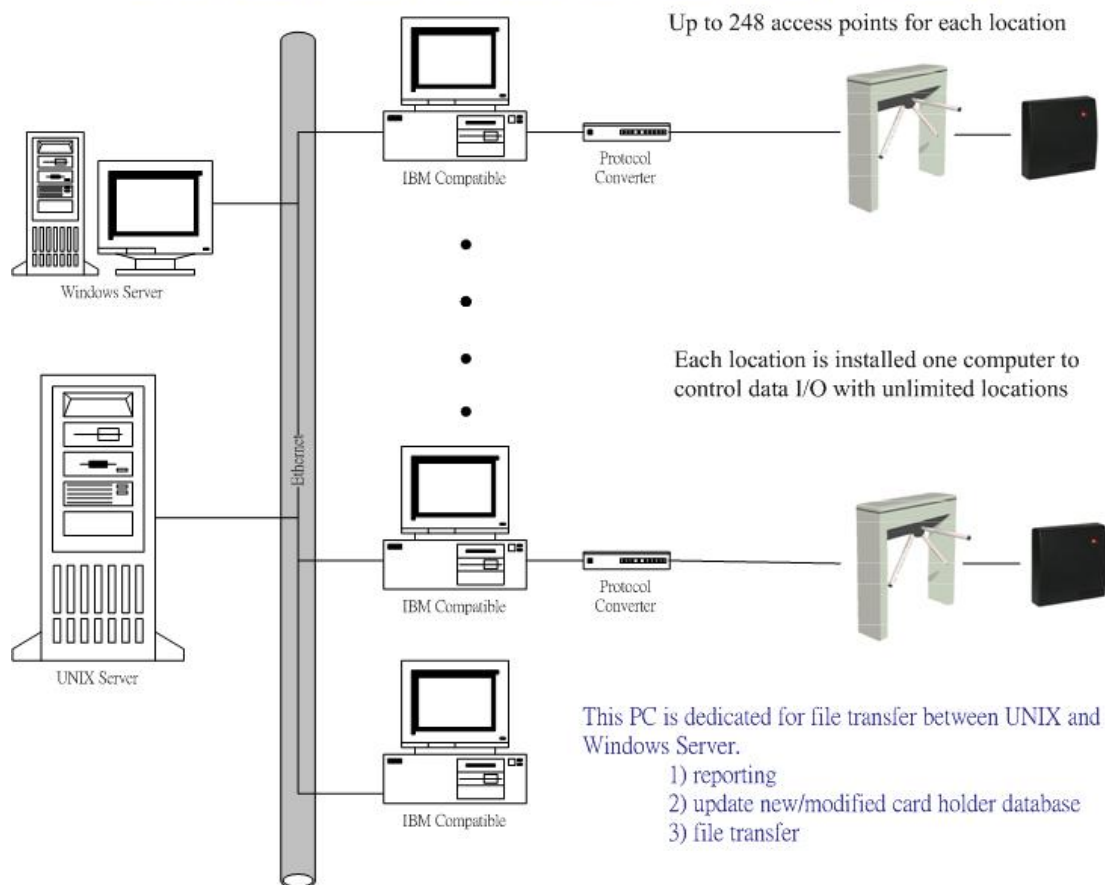


PC Master - Access Control System

Unlimited Number of Card Holders and Transactions

For Large Corporation and University Library



The PC Master Logic

The software is a tailor-made program to scan and verify the cards from the protocol converter. During the operation, the computer (PC) is the Master Control Unit, all verification and identification are controlled by the PC. The databases file and the transaction output file are also saved in the computer hard drive.

It is ideal for University Library Gate control system, the system can automatically import card list at mid-night from Library card system or real time update via SQL table direct update.

Unlimited Card Database

The number of card holder storage is unlimited basically. Thanks for MS SQL database engine provide an fast and reliable environment for database management.

Card Reading Device

The Card Reading Device may be anything you have, such as wiegand, RS485 or RS232 communication. Eg. Barcode reader.